

Name _____

Period _____

Date _____

Ms. Schmidt

Pre-Calculus

Weekly Homework Quiz 3

This is a weekly homework quiz that will be given every week and is due back the following Monday.

This quiz is due back: **October 10th, 2017**

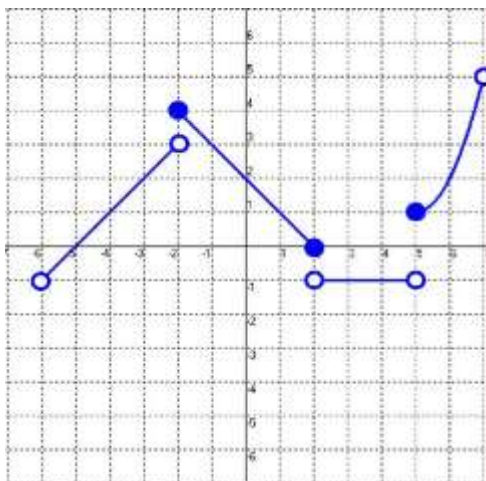
To receive full credit, all work must be shown. Any correct answer without work shown will receive only 1 point. Each question is worth 4 points.

1) When $f(t) = 5t - 1$ and $g(t) = 7t + 6$ find $\frac{f(\frac{n}{5})}{g(\frac{n}{5})}$ in simplest form.

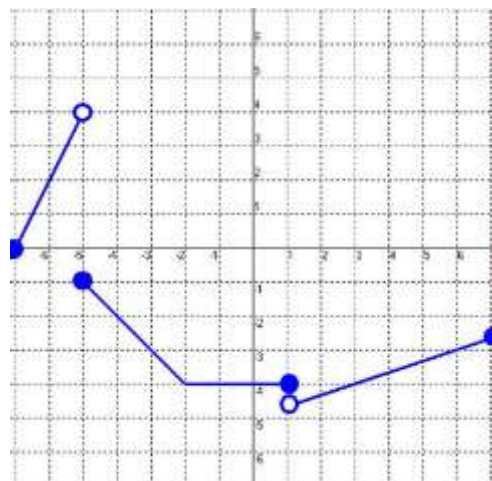
2) Expand completely $(2y - 1)^6$

3) Find the domain and range of each of the following [in interval notation]:

a.



b.



4) Algebraically, find the inverse of $f(x) = -\frac{1}{3}x + \frac{5}{7}$ using function notation.

5) State if the given function and the inverse you solved for in #4 are inverses. Show ALL work!